

ePIPE - First in UK

Lining of Communication and Supply Lead Drinking Water Pipes

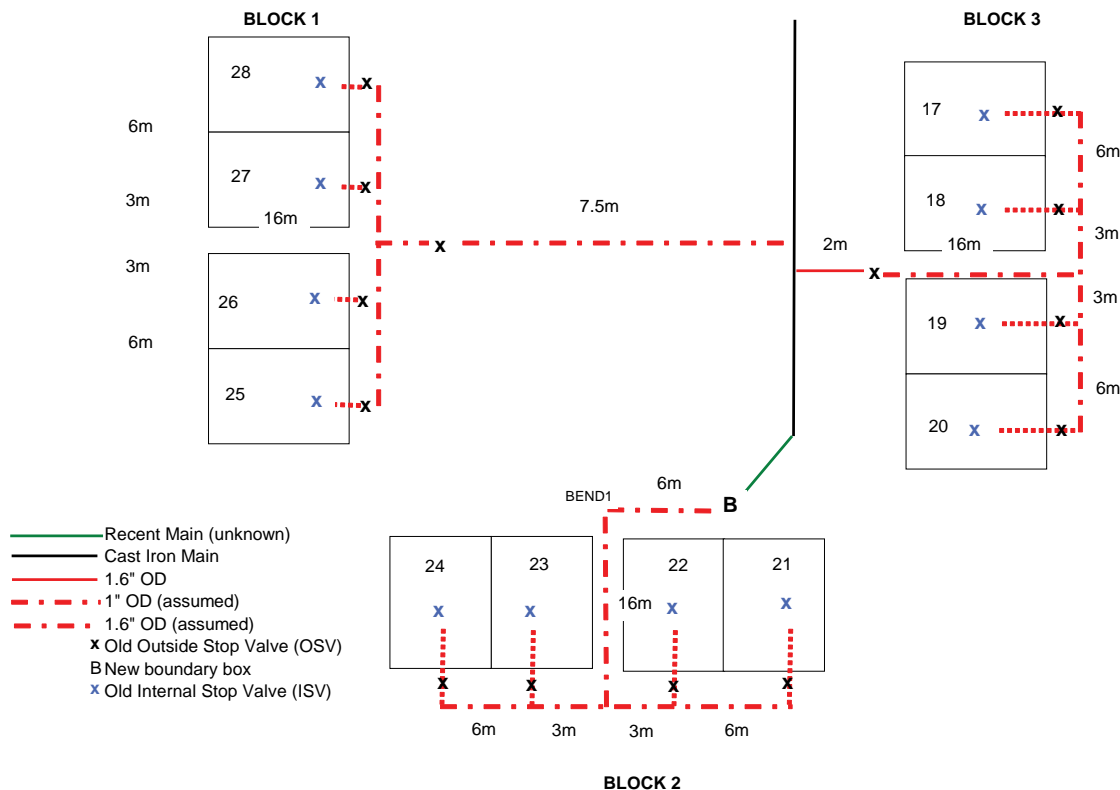
In December 2013 the EU will adopt the new World Health Organization (WHO) quality standard for lead in drinking water of 10 µg/l (10 ppb). The ePIPE lining and system of application provides an effective answer to water pipe communication or supply line replacement for either lead or leakage programmes. Lining the entire service supply lines from the water main to the customers tap, the ePIPE process provides a more comprehensive and robust solution to tackling the dissolved lead issue within the drinking water supply.

ePIPE® Lead-Free, Leak-Free™ Pipe Protection is the first lining material and process of its kind to meet the stringent requirements of both UK's Water Regulatory Advisory Scheme (WRAS) and the UK's Drinking Water Regulation 31 program.

The project objective was to line, in-place, a number of lead pipes that carry drinking water (both communication and supply pipes) using the patented ePIPE process.

The communication pipe section was a 3/4" ID lead pipe running under the road to the customer's boundary box, a distance of about 7.5m.

The 1/2" ID common lead service pipe, served 4 units, and was configured with "T" type intersections which permitted the branch lines to connect.



ePIPE - First in UK

Lining of Communication and Supply Lead Drinking Water Pipes

Continued

The advantage of the ePIPE process over other methods for replacement or remediation is the ability to apply the approved coating to the insides of pipes having common connections and to minimize digging up the pipes on the customers property or to dig up across the roadway to lay a new communication pipe.



The ePIPE Process

Pipes were heated, drained and prepared for the coating. At least 2 undisclosed customer side leaks were identified and were repaired during the lining process. The coating process was broken into 2 primary segments...

- 1) Long side 3/4" ID lead communication pipe, under the road, length about 7.5M
- 2) Common supply 1/2" ID lead pipes with single section lengths up to about 11m.

The pipes were then coated and cured in the 2 hour time frame. Inspection took place using a micro camera and water was then restored.

Starting daytime temperatures were about -7C and never rose above freezing for the day.

